

Battery Rack

6-LAYER RACK USER MANUAL

**SUPPORT**

If you are experiencing technical problems and cannot find a solution in this manual, please contact ECO-WORTHY for further assistance.



· Call: +1 866-939-8222 (US&CA)
+49 6175-6514-999 (DE)
+44 7553-406-988 (UK)

· Web: www.eco-worthy.com/

· E-mail: customer.service@eco-worthy.com

Contents

I. Product Introduction	1
II. Packing List	2
III. Assembly of the Rack	7
IV. Battery Installation and Wiring	9
V. Technical Support	11

I. Product Introduction

The 6-tier Rack V2 features an effective shelf height of 17.5 cm. The side panels are designed with elongated screw holes, which ensures compatibility with most standard-sized Server Rack batteries available on the market. Additionally, the newly added 600A busbar enables balanced output among the batteries, contributing to extended battery life and enhanced overall system performance.

Compared to the V1 version, the V2 has a more robust structure. The four vertical columns have been widened to 6 cm and 8 cm respectively. Both the base and the sides are constructed using a welded structure, which increases the overall strength and reduces the risk of deformation. The entire rack is composed of six structural components, and the main assembly can be completed with just 18 screws, improving assembly efficiency.

If you would like to view the installation video for Rack V2, you can visit or scan the QR code:

<https://www.youtube.com/watch?v=uccLA-DkTjA>



II .Packing List

2.1 Screws :

① Hex Socket Cap Screw M8×16 with Flat and Spring Washers (24 pcs)

Usage : For fixing the base to the vertical columns (8 pcs) and the base to the leveling casters (8 or 16 pcs).



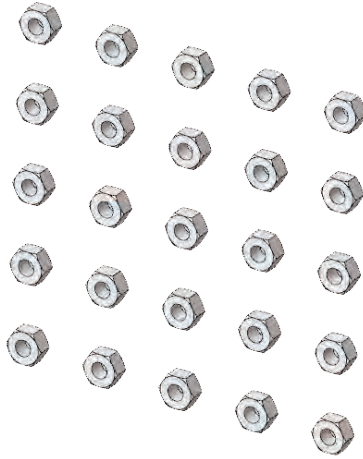
② Phillips Hex Head Bolt M6×12 with Flat and Spring Washers (50 pcs)

Usage : For installing the busbar (16 pcs, pre-installed), installing the V-shaped steel on the back (6 pcs), installing the top cover (4 pcs), and fixing the Server Rack batteries (24 pcs).



③ Flange Nut M6 (25 pcs)

Usage : For fixing the Server Rack battery (24 pcs, 1 spare).



④ Phillips Hex Head Bolt M4×12 with Flat and Spring Washers (1 piece)

Usage : For grounding the rack, with the grounding hole located below Column B.



2.2 Other Accessories :

① Insulating Terminal SM20 M6 (16 pcs)

Usage : Combined with the PVC conduit to create an insulating barrier between the busbar and the rack, pre-installed.



② PVC Conduit: 50H×60W (mm) (2 pcs)

Usage : Combined with the insulating terminal to create an insulating barrier between the busbar and the rack, pre-installed.



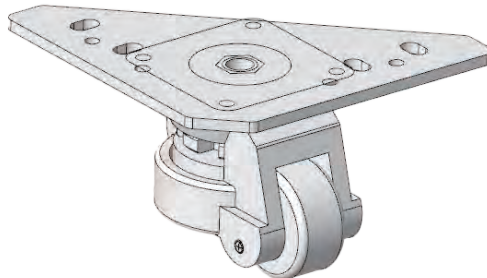
③ **Copper Busbar 1000×40×4 mm (2 pcs)**

Usage : Combined with the PVC conduit to create an insulating barrier between the busbar and the rack, pre-installed.



④ **Leveling caster, Triangular Plate Style, 60T (4 pcs)**

Usage : Installed at the bottom of the rack to facilitate moving and securing the rack.



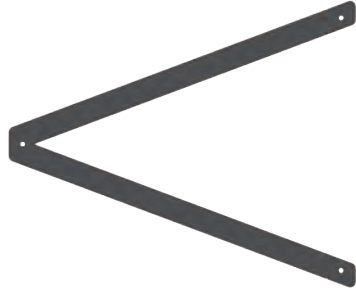
2.3 Structural Components



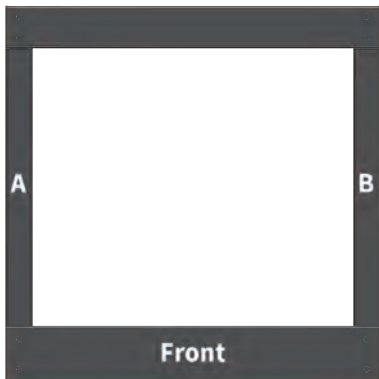
Side Welded
Structure (A)



Side Welded
Structure (B)



V-shaped Fixing Steel



Base

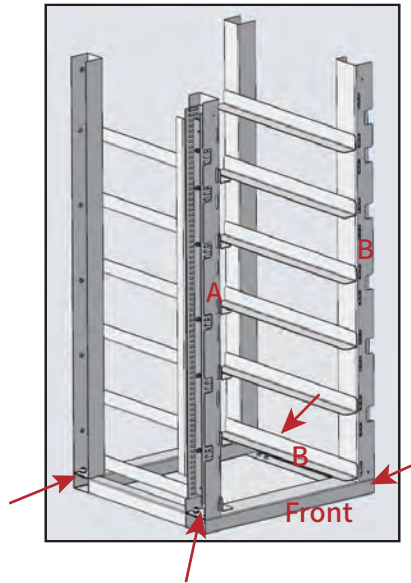


Top Cover

III. Assembly of the Rack

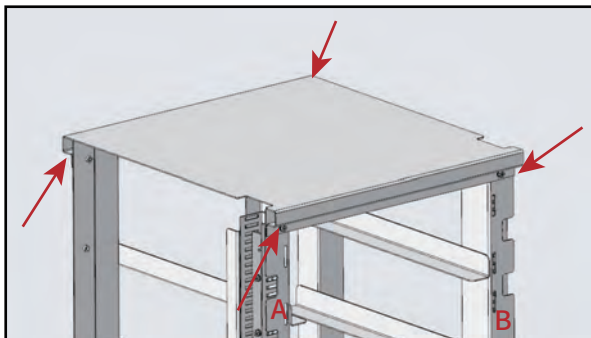
STEP 1:

As shown in the fig. below, use 8 M8 screws to fix the base to the vertical columns.



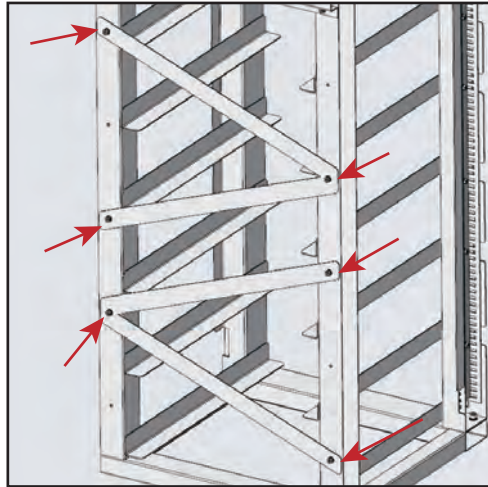
STEP 2:

As shown in the fig. below, use 4 M6 screws to install the top cover. Note that the side of the top cover with the notch should be close to the side printed with “A” and “B”.



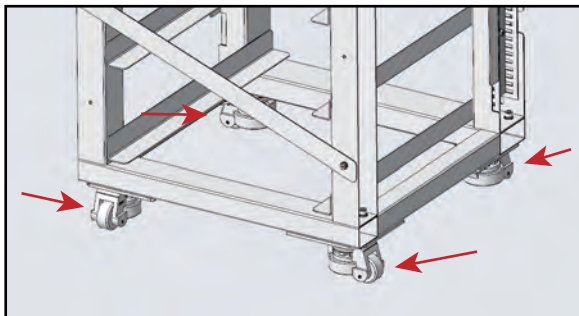
STEP 3:

As shown in the fig. below, use 6 M6 screws to install the V-shaped fixing steel on the back .



STEP 4:

As shown in the fig. below, use 8 or 16 M8 screws to install the 4 leveling casters to the base. For easier installation, the rack can be laid flat.



IV. Battery Installation and Wiring

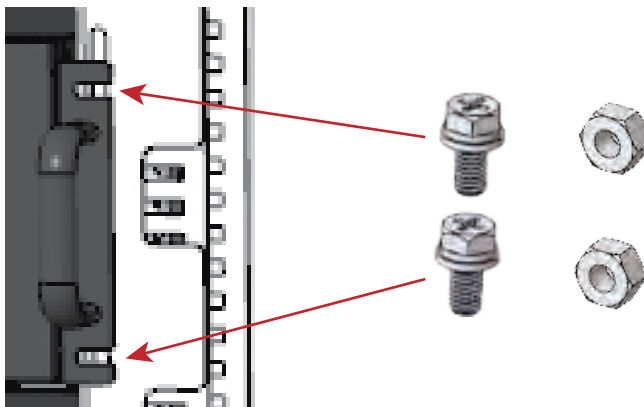
STEP 1:

After assembling the rack, place the batteries into the rack. The effective shelf height of the rack is 17.5 cm.



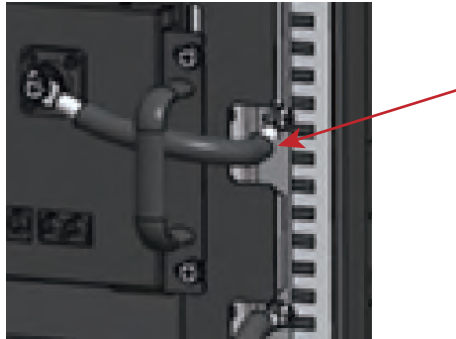
STEP 2:

Use M6 screws and nuts to secure the batteries to prevent them from slipping.



STEP 3:

As shown in the fig. below, cut the PVC conduit and connect the batteries to the busbar.



Final result as shown in the fig. below:



V .Technical Support

1) Customer service email:



E-mail: customer.service@eco-worthy.com

2) Company address: USA/Germany



Address(US): 4411 East State Hwy D Suite C Springfield, Missouri 65809



Address(DE): ECO-Worthy Europe GmbH Otto-Hahn-Str. 20 61381 Friedrichsdorf - Köppern Germany

3) Customer service telephone numbers:

Tel(DE): +49 6175-6514-999

Tel(US&CA): 1-866-939-8222

Tel(UK): +44 7553-406-988

Note:

Customer Service Hours:

US: Mon-Fri 8:30AM - 6:00 PM(CST)

UK: Mon-Fri 9:00 AM - 5:00 PM(GMT)

DE: Mon-Fri 9:00 AM - 5:00 PM(CET)

4) Official website address:



Web: <https://www.eco-worthy.com/>

5) Official social media:



Facebook: <https://www.facebook.com/ecoworthy.store/>



Youtube: @ecoworthy



Tiktok: https://www.tiktok.com/@eco_worthy